

BlueSoleil (Standard) Edition

Quick Installation Guide

System Requirement

A PC running Windows 2000 or Xp:

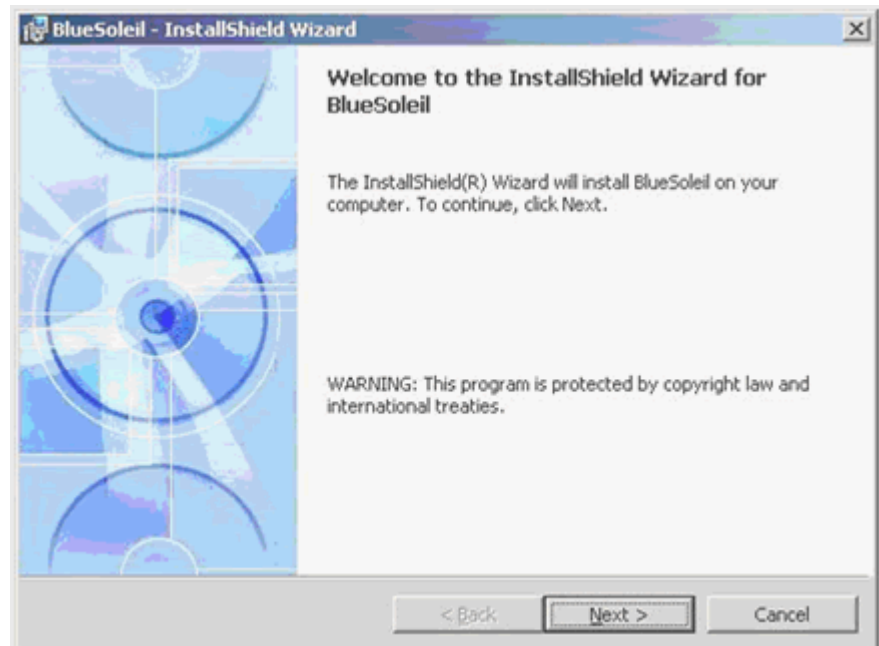
- Processor - Minimum: 266 MHz;
Recommend: 1GHz
- Memory - Minimum: 64 MB RAM;
Recommend: 256 MB RAM
- 12 MB free space on hard disk

1. Install BlueSoleil

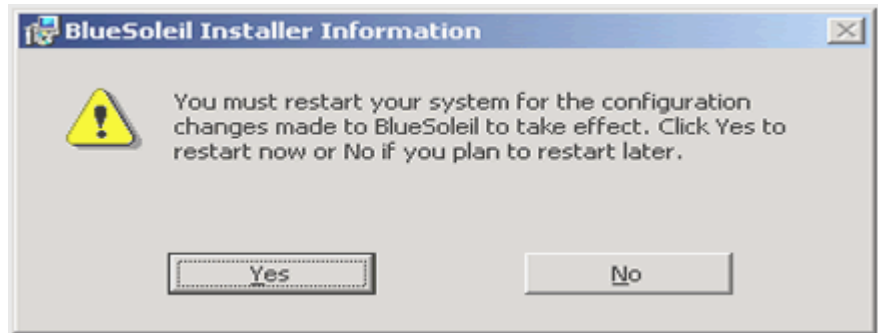
- 1.1 Click setup.exe to start installation.
- 1.2 Choose the setup language.



- 1.3 Go ahead following the instructions of the Wizard.



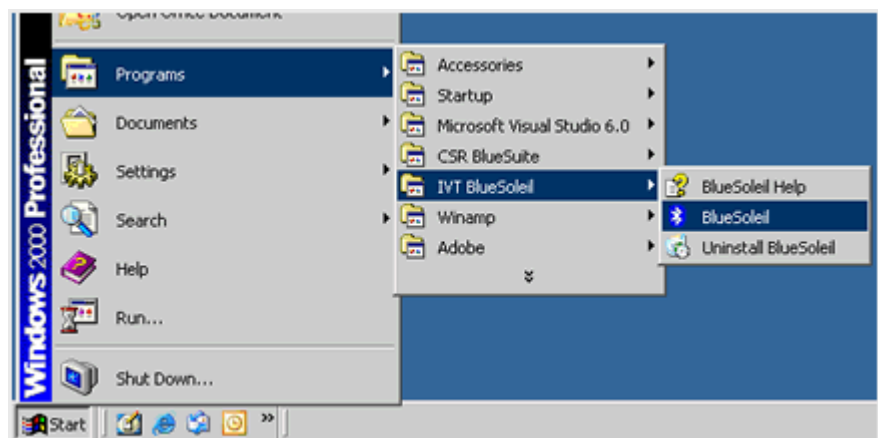
- 1.4 Restart your system.



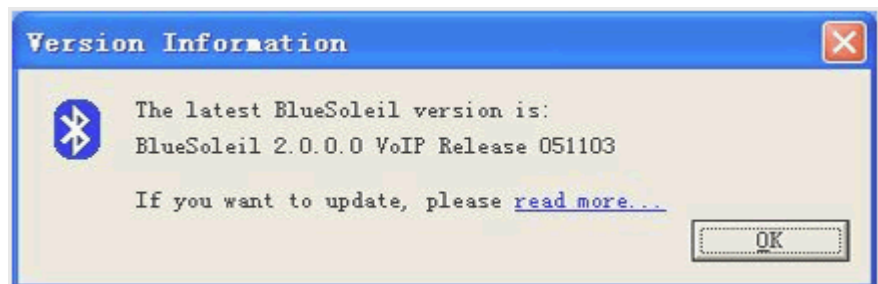
1.5 Insert your *Bluetooth* device into USB/other port.

2. Start up BlueSoleil

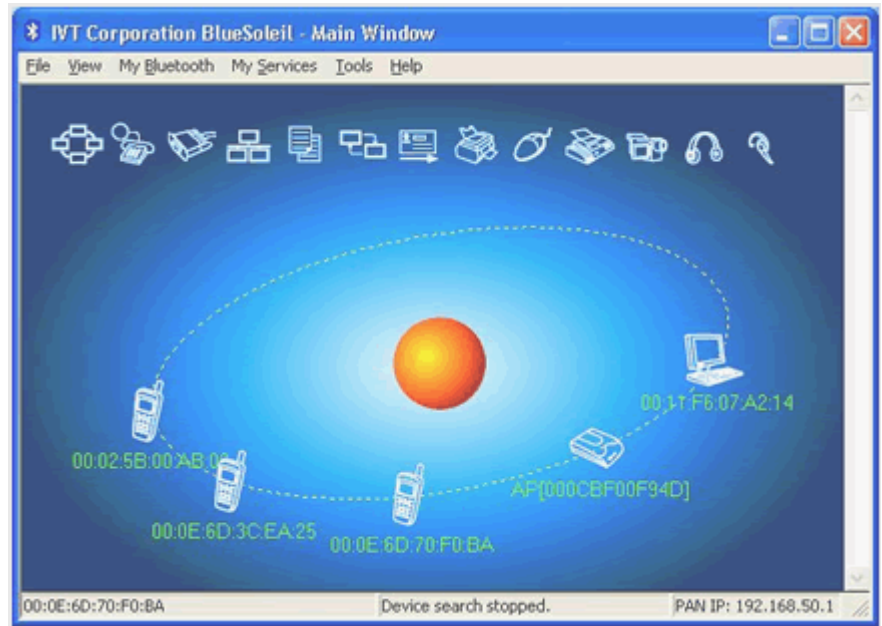
2.1 Start up BlueSoleil following the instructions in the image.



2.2 Click OK to close update-checking tip message.

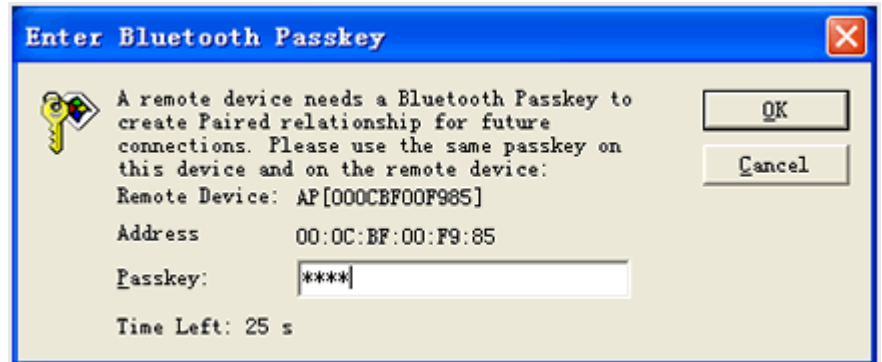


2.3 On the BlueSoleil main window, single-click the red central ball to start searching the *Bluetooth* devices in range. They'll be found and displayed as various device icons on the orbit.

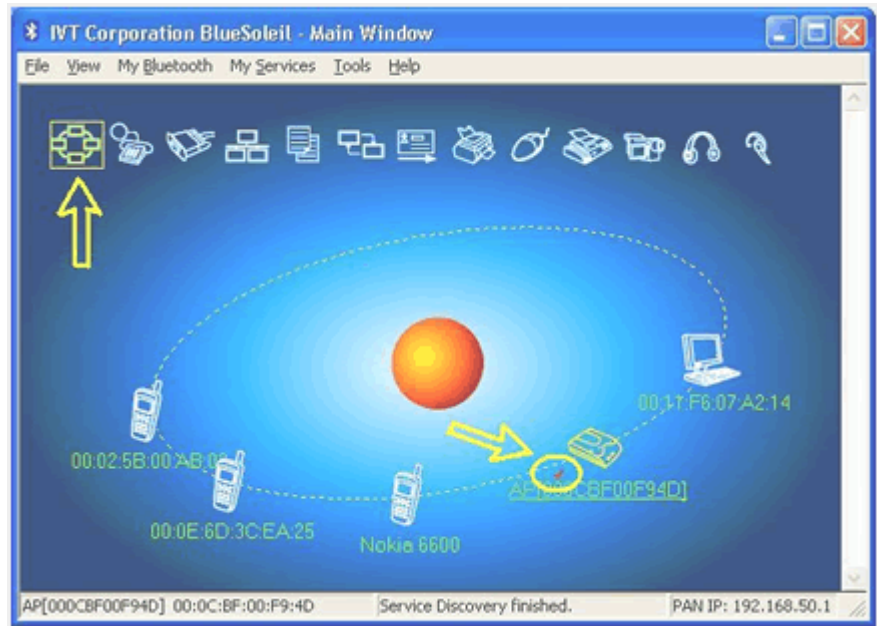


2.4 Double click one device icon to browse its service.

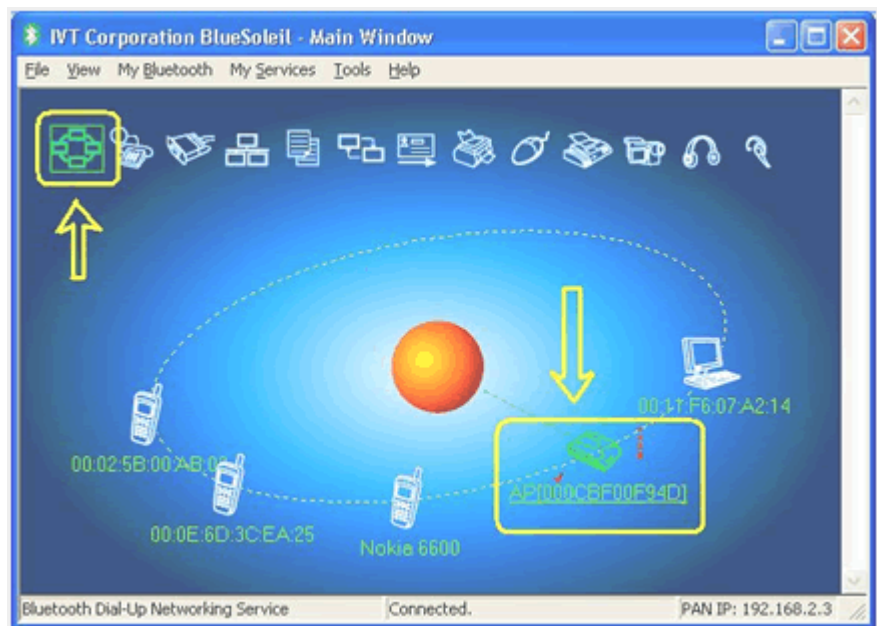
Note: In some cases, you need to make the trusted relationship between BlueSoleil and the remote device by inputting the same passkey on both sides. On BlueSoleil side, the following dialog will pop up, you can enter the passkey here.



2.5 After the pairing procedure succeeds, a tick sign will appear beside the device icon. The available services icons will be highlighted.



2.6 Single click one of the highlighted service icons, BlueSoleil will establish a *Bluetooth* connection to the remote device. The device icon changes to green color and a line appears between the red ball and the device icon.



3. Notice for Windows 2000/XP

Expected outcome:

3.1

Installed Files & Directories (by default):

- <Windows program files>\IVT Corporation\BlueSoleil
BlueSoleil execution and support files.

- <Current user>\My Documents*Bluetooth*

Support directory. This is the directory for Object Push and Synchronization. Received cards and

other objects will be put here.

3.2

Installed devices:

- 11 *Bluetooth* Serial ports(e.g. COM3-COM13)
- *Bluetooth* PAN Network Adapter
- 4 *Bluetooth* virtual Modem
- *Bluetooth* AV Audio Device
- *Bluetooth* SCO Audio Device
- *Bluetooth* HID Enum device
- *Bluetooth* Vcomm Manager
- *Bluetooth* HID Manager