

- **Installation for Windows Vista**

After you complete the hardware installation, follow the steps below in order to install the BN-WD54G Wireless USB Adapter drivers for Windows Vista:

1. Right-click the **Computer** icon as shown in the Figure 1-, select the **Properties**.

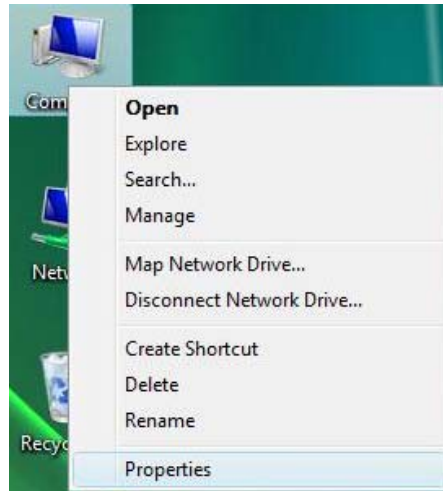


Figure 1-1 Begin installation for Windows Vista

2. Select **Device Manager** as shown in Figure 1-, then select **Continue** in the next screen.

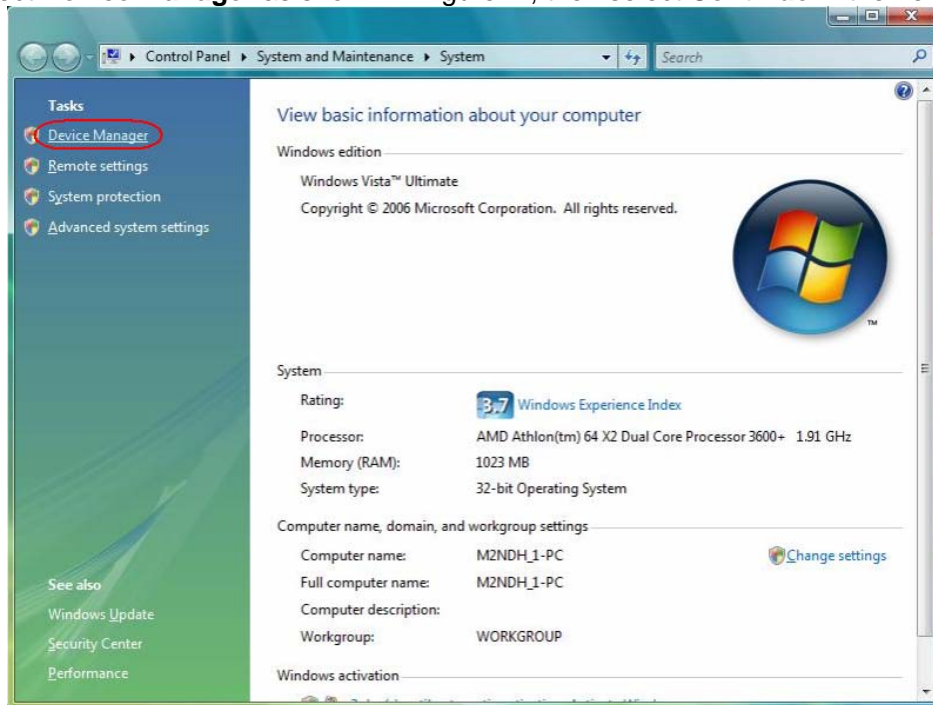


Figure 1-2 Select Device management

3. Right-click the adapter icon "**54M.USB...**", and select "**Update Driver Software**" to proceed.

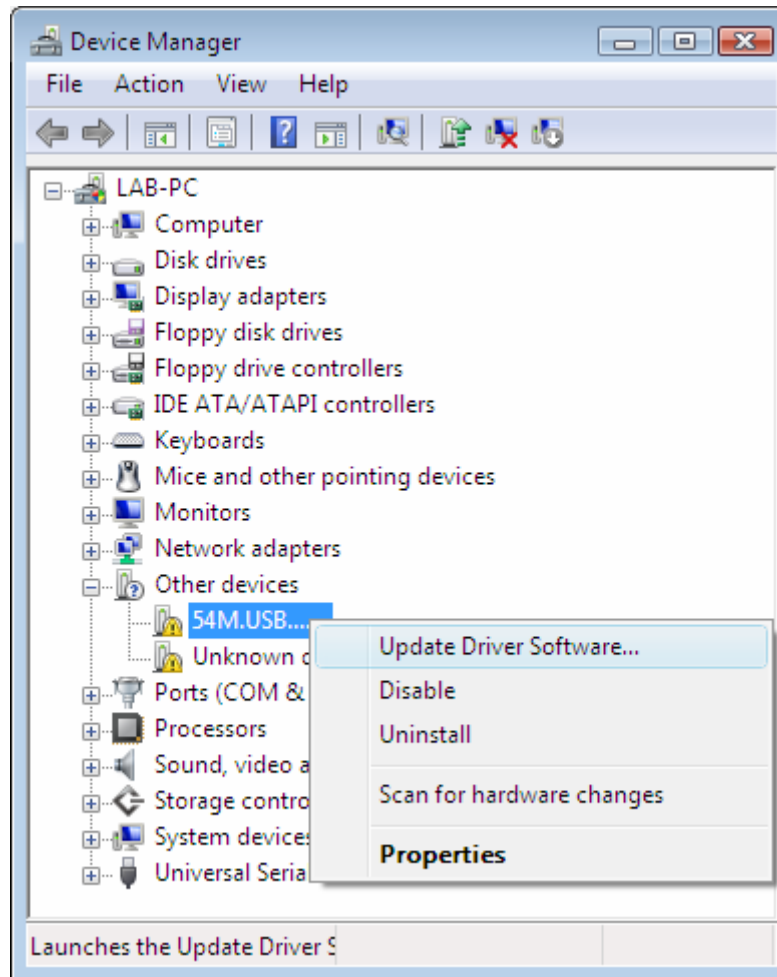


Figure 1-3 Driver management

4. Select the method to update the driver software (see Figure 1-4). If you want the system to search the software automatically, select the first type. Otherwise select "**Browse my computer for driver software**" to install the software (best way).

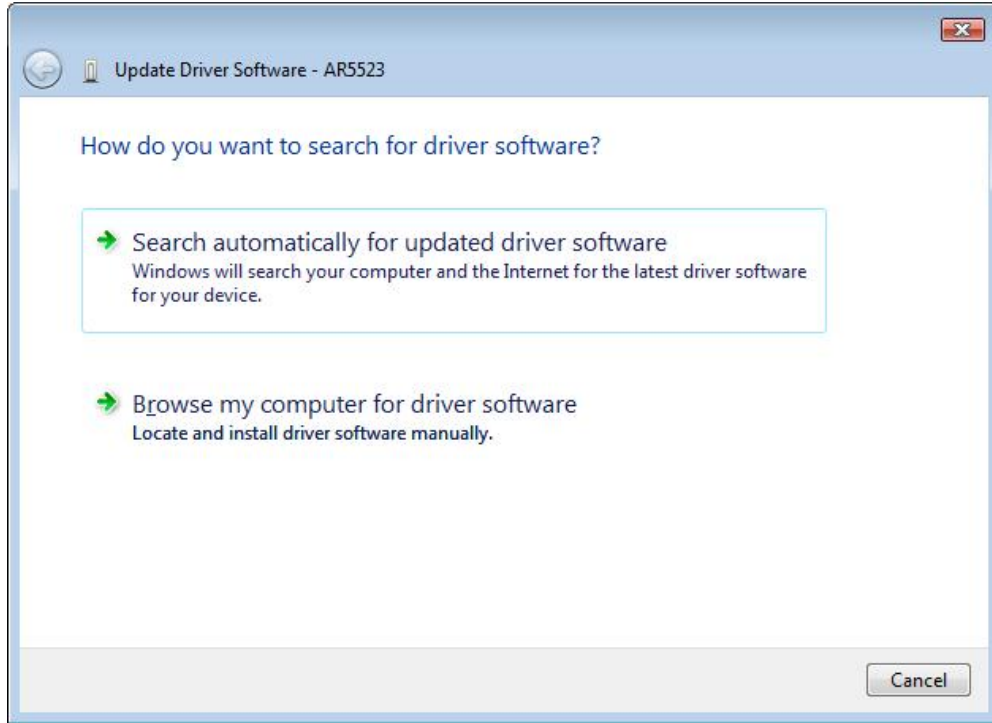


Figure 1-4 Select the method to install

5. Click the **Browse** button in the next screen to select the file which contains the driver software for the adapter. After that, click **Next** to proceed.

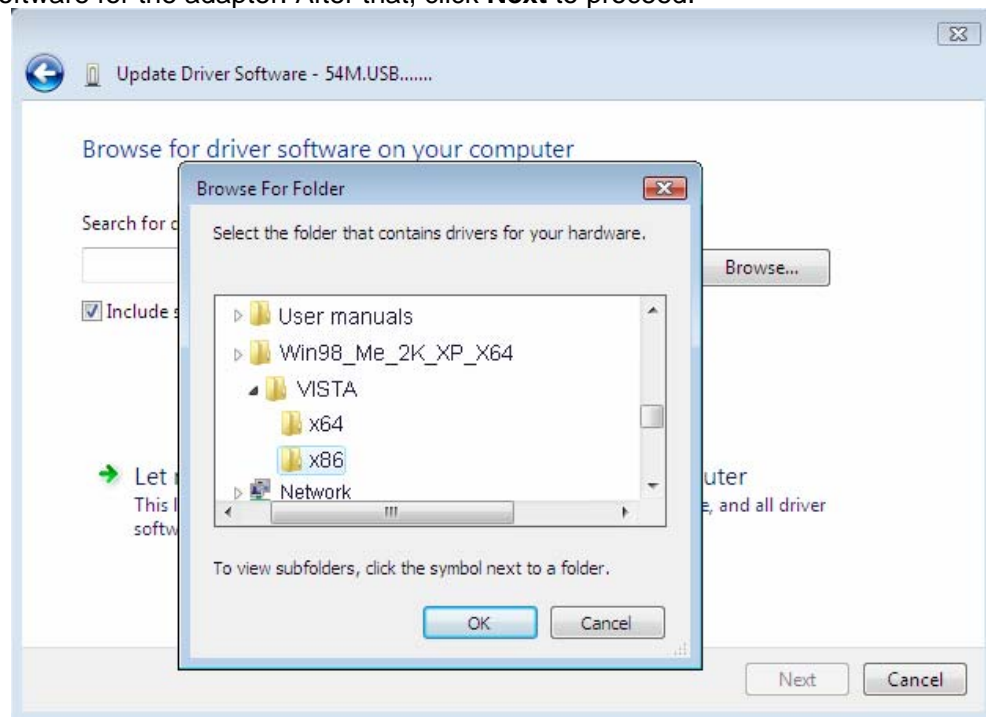


Figure 1-5 Select the driver software

 **Note:**

Vista X86 is designed for the Vista of 32bit, Vista X64 is designed for the Vista of 64bit, please select according as you need.

6. After that, the installation will proceed as shown in Figure 1-.

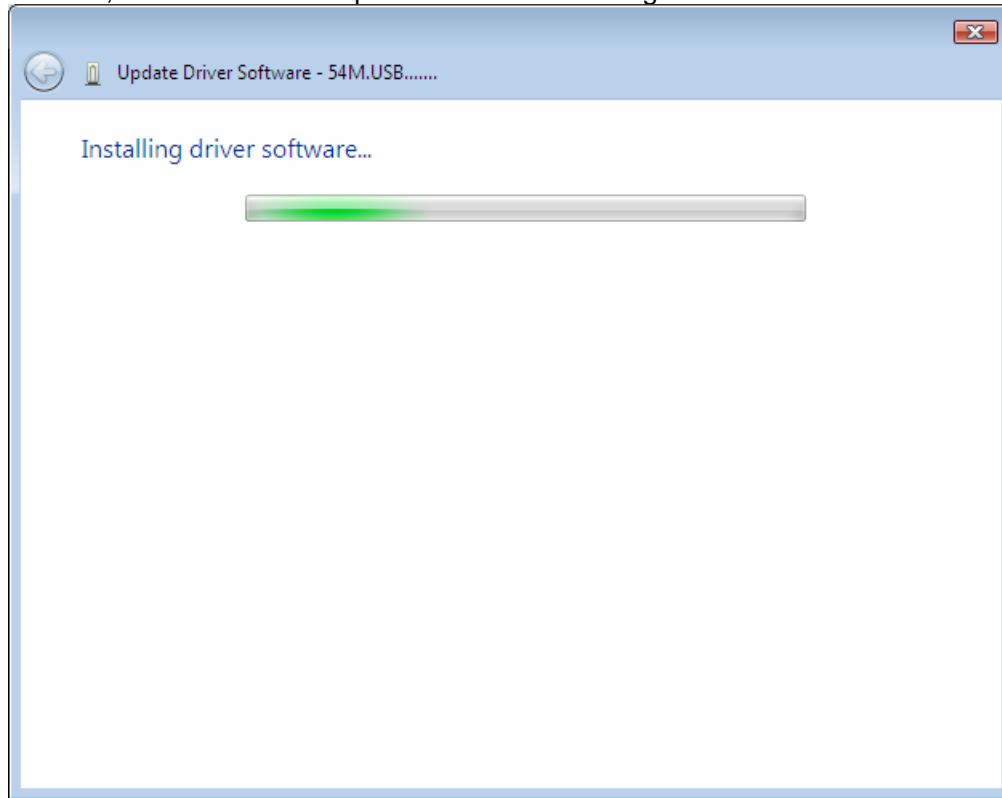


Figure 1-6 Installing

 **Note:**

During the installation, you will see the warning box as shown in Figure 1-7, please select "Install this driver software anyway" to proceed.

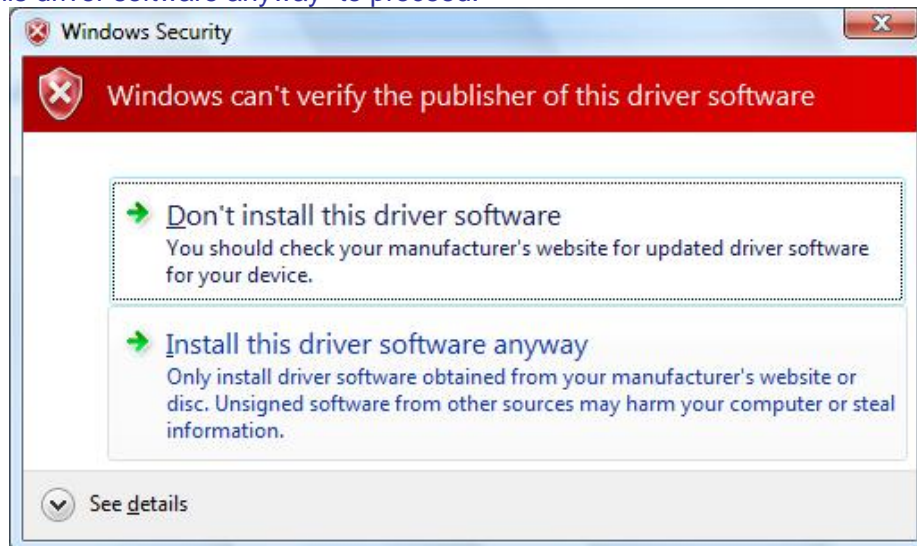


Figure 1-7 warning for security

7. Finally, the installation will complete, you will see the next screen below, click **Close** to complete.

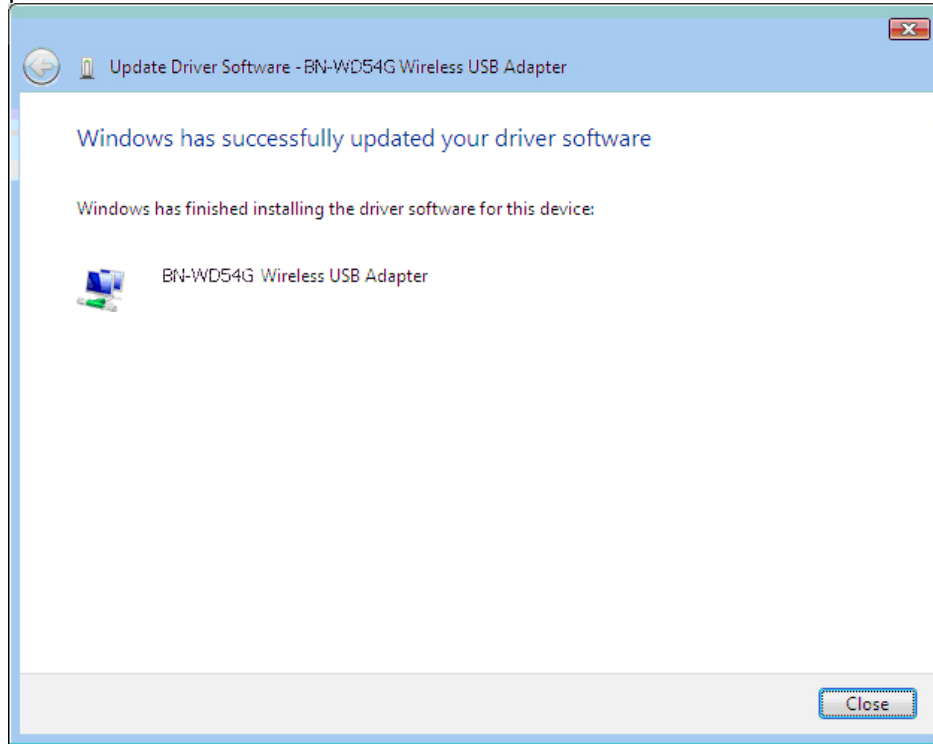


Figure 1-8 Complete the installation

- Configuration for windows Vista

After the Adapter's driver has been installed, Windows Vista will display a wireless Network Connection message like this one.

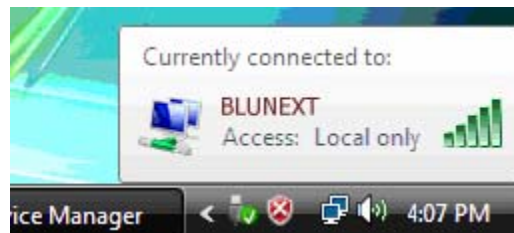
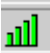
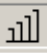



Figure 2-1

Icon  means the connection has been established. Icon  means there is no connection.

If the icon does not appear, please follow the steps below. If the icon still does not appear, the driver may be installed incorrectly or the adapter is unplugged, please try again.

1. Right-click the icon  in your system tray, then click **Connect to a network** .

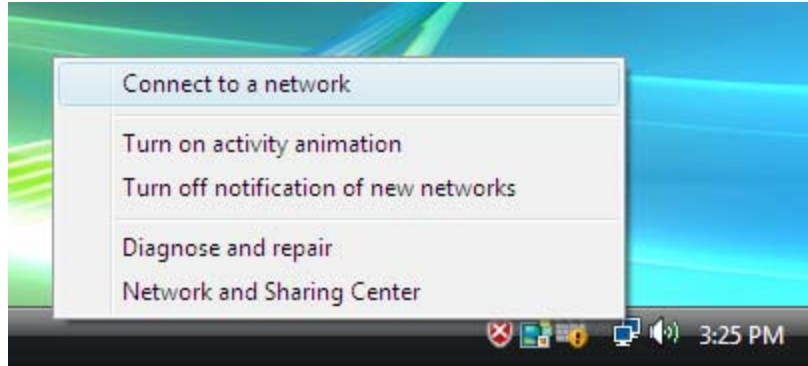


Figure 2-2

2. The screen that appears will show you many available wireless networks. Highlight the network that you want, and then click **Connect**.

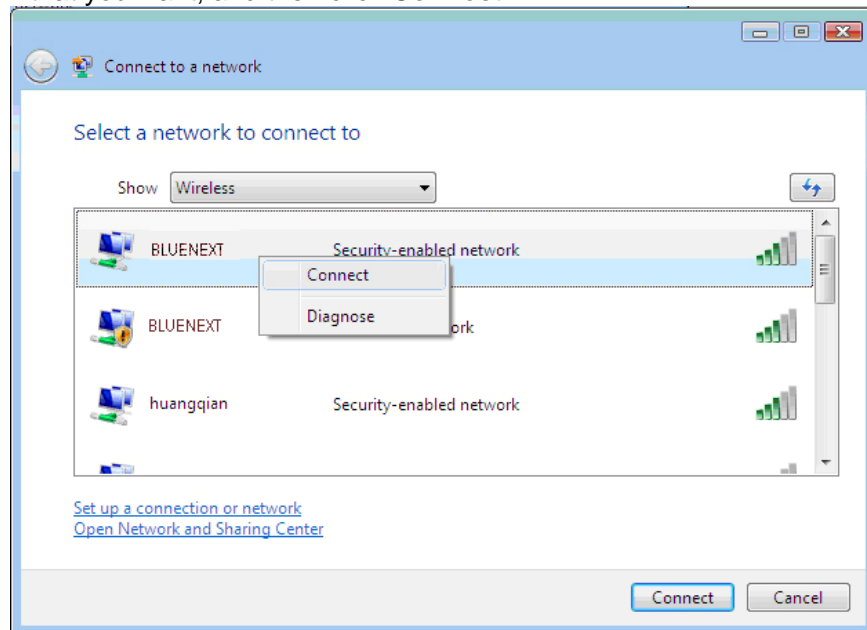


Figure 2-3

3. To continue, click **Connect Anyway**. Click the **Cancel** button to end the Installation.

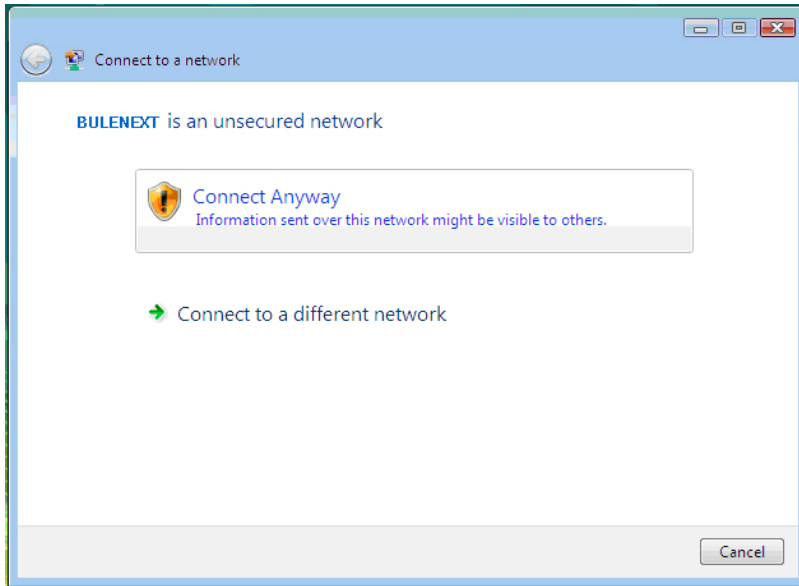


Figure 2-4

4. After that, the installation will proceed as shown in Figure 2-5, click **close**.

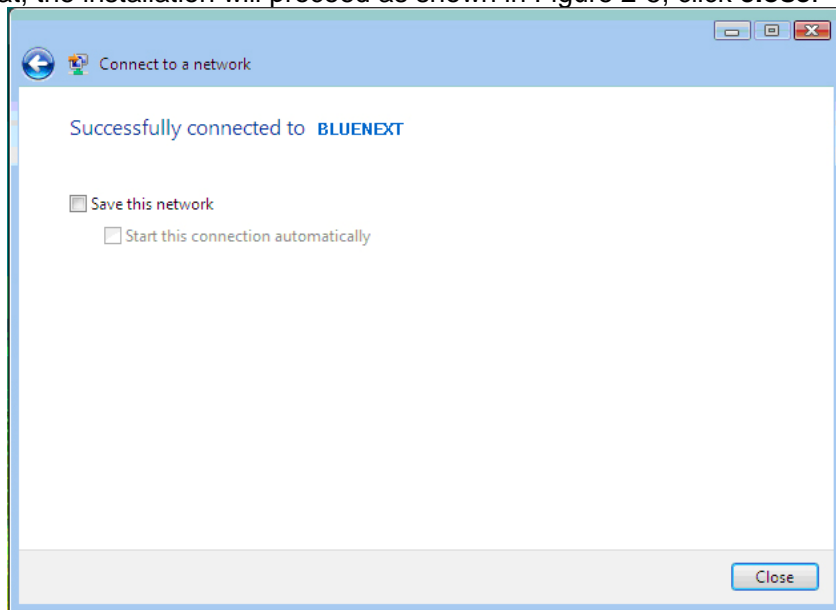


Figure 2-5

5. The screen below will appear if the connection is successful.

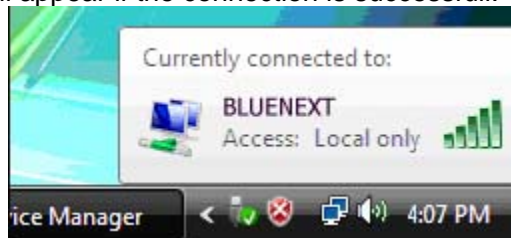


Figure 2-6